

Locomarine™

YACHT ROUTER



4G BOOSTER
S E R I E S

The Easiest Way to Stay Online

Yacht Router device will help you to easily setup and control Internet connections on your vessel. It is designed for people without special computer or network education.

www.yachtrouter.com

YACHT ROUTER

Yacht Router is a complete network infrastructure solution for yacht or boat of any size. Yacht Router devices will help you to easily install, setup and control Internet connection on your yacht. The most important part of Yacht Router solution is Yacht Router Control Software which is designed to simplify setup and control of the system.

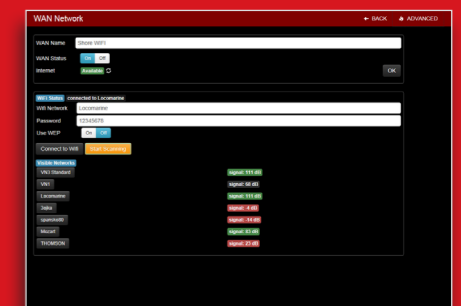
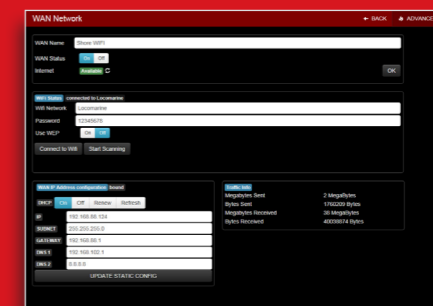
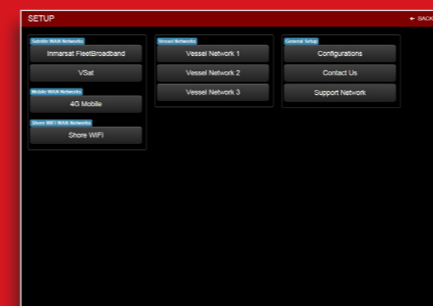
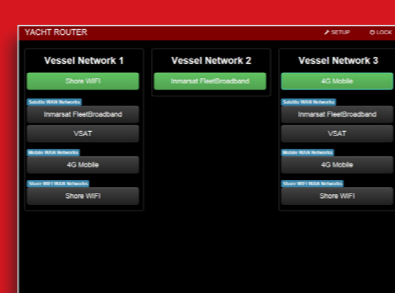
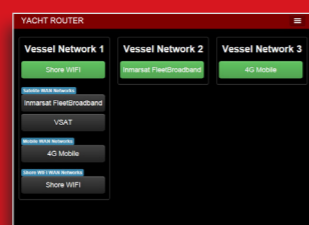
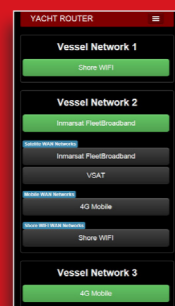
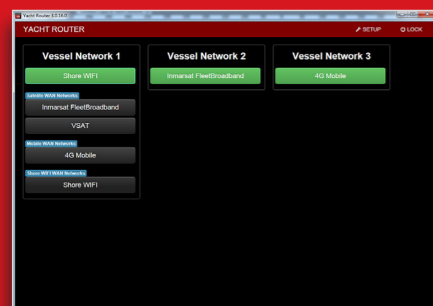
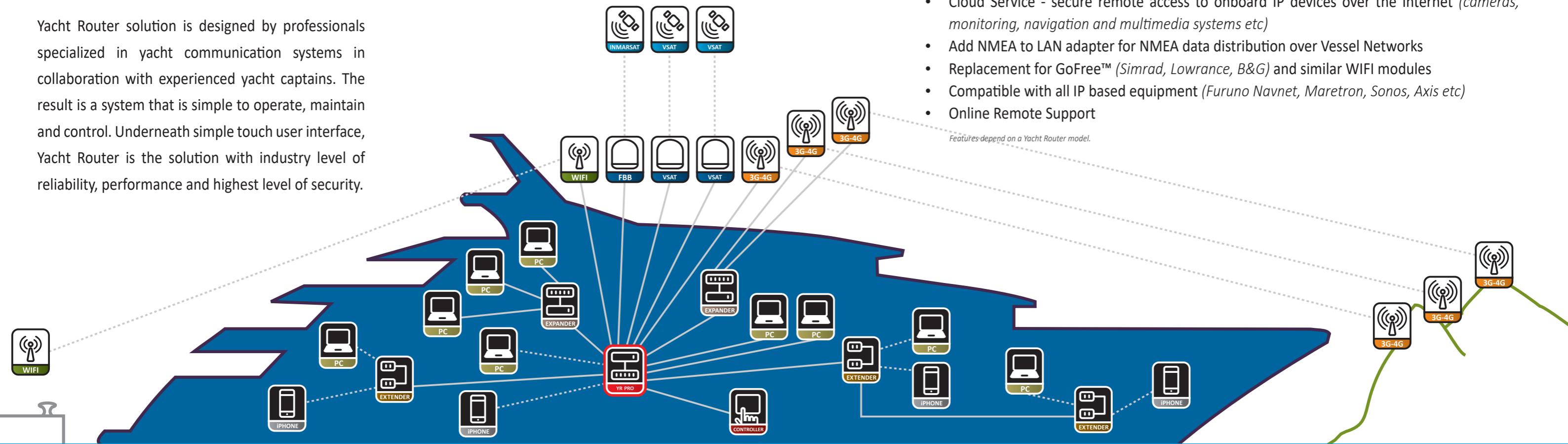
Yacht Router solution is designed by professionals specialized in yacht communication systems in collaboration with experienced yacht captains. The result is a system that is simple to operate, maintain and control. Underneath simple touch user interface, Yacht Router is the solution with industry level of reliability, performance and highest level of security.



FEATURES:

- From small boats to megayachts
- Simple installation and setup
- High power WIFI Booster for long distance connectivity (15+ Nautical miles)
- High power 4G/3G/2G module (30+ Nautical miles)
- Multiple Client-to-Vessel WIFI/LAN networks (Owner, Guest, Crew etc)
- Multiple internal Hotspots
- WAN ports for satellite Internet (VSAT, Inmarsat, Iridium) or shore (ADSL) equipment
- Cloud Service - secure remote access to onboard IP devices over the Internet (cameras, monitoring, navigation and multimedia systems etc)
- Add NMEA to LAN adapter for NMEA data distribution over Vessel Networks
- Replacement for GoFree™ (Simrad, Lowrance, B&G) and similar WIFI modules
- Compatible with all IP based equipment (Furuno Navnet, Maretron, Sonos, Axis etc)
- Online Remote Support

Features depend on a Yacht Router model.



Yacht Router Control Software is available on multiple platforms (Windows, Android, iPhone, iPad) featuring same design and functionality. Moreover, you can simultaneously use different devices to control Yacht Router devices. Yacht Router Control Software is simple and intuitive and you will need not more than 10 minutes to learn how to use it.

Yacht Router solution features simultaneous independent Internet connection for each Vessel Network. It means that, for example, all devices connected to **Owner WIFI** can access the Internet via VSAT while in the same time devices connected to **Guest WIFI** can connect to Internet via 4G mobile network. Yacht Router setup is simple and you do not have to be IT

specialist to do it. All Yacht Router models (Micro, Mini, Standard, Pro) use multi-frequency modems for mobile networks connections (4G/3G/2G) and powerful WIFI Boosters for longer distance connectivity to Hotspots in marinas and ports (15+ Nautical miles). If you are installing Yacht Router on a steel or aluminum boat or larger yacht you can expand Vessel

Network WIFI coverage using **WIFI Extender**. It is a device that will extend WIFI coverage using single Power Ethernet (PoE) cable. Moreover, on a larger yachts you can connect multiple WIFI Extenders. If you want to expand Yacht Router with additional mobile network modems (4G/3G/2G) or multiple LAN ports, **Mobile** and **LAN Expanders** are available.

Yacht Router Micro

Yacht Router Micro is intended for installation on smaller boats and yachts without satellite Internet source (VSAT, Inmarsat, Iridium etc). It will provide the ability to establish single vessel WIFI network (Client-to-Vessel) which you will be able to connect to other WIFI networks (e.g. marina WIFI Hotspots) or mobile networks (2G/3G/4G).



Yacht Router Mini

Yacht Router Mini is designed for installation on smaller vessels with single satellite Internet source (VSAT, Inmarsat, Iridium etc). It will provide the ability to establish two vessel WIFI/LAN networks (Client-to-Vessel) which you will be able to independently and simultaneously connect to other WIFI networks (e.g. marina WIFI Hotspots), mobile networks (4G/3G/2G) or satellite Internet equipment. For vessels where single WIFI Access Point is not enough to cover all vessel areas, additional WIFI Extender can be connected.



Yacht Router Standard

Yacht Router Standard is designed for installation on vessels with single or dual satellite Internet source (VSAT, Inmarsat, Iridium etc). It will provide the ability to establish three vessel WIFI/LAN networks (Client-to-Vessel) which you will be able to independently and simultaneously connect to other WIFI networks (e.g. marina WIFI Hotspots), mobile networks (4G/3G/2G) or satellite Internet equipment. For larger vessels where single WIFI Access Point is not enough to cover all vessel areas, multiple WIFI Extenders can be connected.



Mobile Expander

Mobile Expander is a device that will expand Yacht Router with additional mobile network modem. It is designed for vessels that are cruising in areas with different mobile network bands. In combination with Yacht Router you will get worldwide coverage for almost all available mobile network bands. Mobile Expander is perfect solution for blue-water cruisers circumnavigating the World. Mobile Expander can also be useful on mid-sized yachts with Yacht Router Mini or Standard in situations when you want to use separate SIM cards for different Vessel Networks (e.g. Owner and Crew).



LAN Expander

LAN Expander is a device that will expand Yacht Router with five additional LAN ports. Each LAN port can be flexibly assigned to Vessel Networks of your choice. As LAN Expander is equipped with Power over Ethernet Backbone port separate power source is not necessary. LAN Expander is very useful device when you need multiple LAN ports on remote locations as you do not have to install multiple LAN cables.



Yacht Router Pro

Yacht Router Pro is designed for installation on larger boats and mega-yachts. It can operate with multiple satellite Internet sources (VSAT, Inmarsat, Iridium etc) and is equipped with features for demanding clients. It will provide the ability to establish multiple vessel WIFI/LAN networks (Client-to-Vessel) which you will be able to independently and simultaneously connect to other WIFI networks (e.g. marina WIFI Hotspots), mobile networks (4G/3G/2G) or satellite Internet equipment. Yacht Router Pro is platform instead of boxed product; it can be set to flawlessly operate with multimedia servers, IP cameras, remote vessel monitoring, Ethernet radars and navigation equipment etc.



Mobile Expander Pro

Mobile Expander Pro is a device that will expand Yacht Router Pro with three additional mobile network modems. If you want to avoid constant mobile SIM card changing while cruising in different areas this is the best solution for you. Moreover, it can be ordered in combination of modems dedicated to different mobile network bands to get worldwide coverage. Mobile Expander Pro is equipped with Mobile Network Bonding feature that will significantly increase upload and download data rate.



LAN Expander Pro

LAN Expander Pro is a device that will expand Yacht Router Pro with 24 additional GbE ports. LAN Expander Pro is not just a simple switch, it is powerful 24 port Gigabit router with capability of flexible assigning of each LAN port to chosen vessel network. Yacht Router Pro support multiple LAN Expander Pro units.



Touch Screen Controller

Touch Screen Controller is dedicated device that will provide the ability to setup Yacht Router and easily control wireless networks and Internet connections on your vessel. It is recommended for complex network installations with Yacht Router Standard and Pro.



WIFI Extender & WIFI Extender Dual

WIFI Extender is a device that will help you to extend Vessel Network WIFI coverage on larger boats or yachts. It is connected to Yacht Router via single PoE (Power over Ethernet) cable for simultaneous power and data transfer. Each WIFI Extender is equipped with four additional LAN ports so you can easily connect more WIFI Extenders or other devices. If you need multiple WIFI Extenders you can use star and/or chain topology to provide connectivity no matter the size of your vessel. WIFI Extender is available as b/g/n and a/ac/b/g/n version.



Local Dealer: